

SERIES - QT

QUARTER TURN PINCH VALVE

RHINO FLEX™

ASSEMBLED IN INDIA SINCE 2004 FOR SEVERE SERVICE SLURRY



APPLICATIONS

- Highly Abrasive /Corrosive Mineral Slurries
- Powders or Granular substances
- Power Stations
- Lime control/Waste and Water Treatment
- Chemicals and Cement
- Food and Beverage
- General Industry

OPTIONAL EXTRAS

- Can be converted to Suit Flanges AS2129 Tab D/E etc
- Can be converted to threaded ends
- Positioners and instrumentation for control

FEATURES

- Fully Vinyl Ester moulded body
- Gear driven Cam-Dual pinch mechanism
- Bubble-Tight shut-off even on trapped solids
- 100% Full bore or reduced /conical bore for control applications.
- No Packing, less maintenance
- Fast and Easy field replaceable sleeve
- On-Off or Control applications
- Flange mounting to suit ASME B 16.5
- All standard elastomer sleeve options
- Easy to fit with standard Quarter turn Pneumatic actuator

ACTUATORS

- Hand-lever/ Quarter Turn bevel gear box
- Standard Pneumatic Single/Double Acting/Fail safe
- Electric Actuators/Fail safe

The Series-QT Quarter-Turn valve is a high flow capacity pinch valve. Designed for hard-to-handle fluids specially slurries. The valve interior consists of fabric reinforced elastomeric or PTFE lined Diaphragm Spool, the only wetted component of the valve. Two opposing gear driven cams, contain in a flanged split vinyl ester-fibreglass body, act on the Diaphragm Spool, providing flow control over the entire 90 degrees of valve stem travel. The valve exhibits negligible pressure drop in the open position and bubble-tight closure even around solids in the closed position. Where solids in the slurry make operation of the other types of valves, such as ball, plug and butterfly valves, extremely problematic, the Series-QT valve is ideally suited for slurries since there are no "dead zones" in the valve internals.



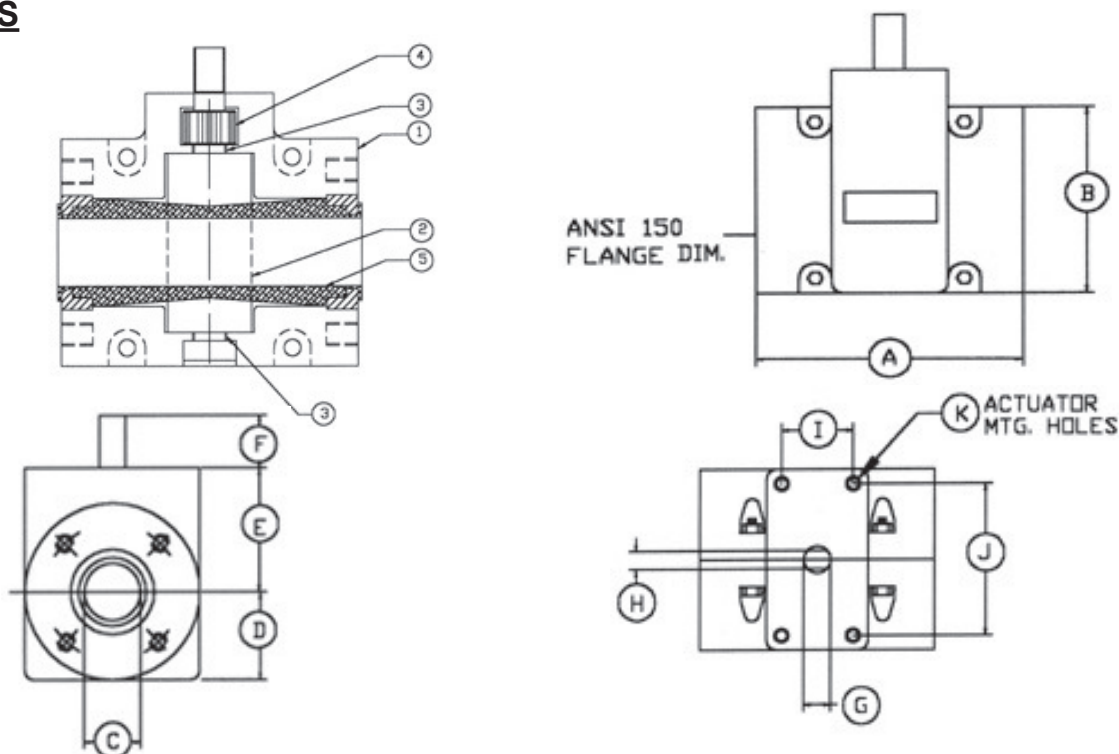
SERIES - QT

QUARTER TURN PINCH VALVE

RHINOFLEX™

ASSEMBLED IN INDIA SINCE 2004 FOR SEVERE SERVICE SLURRY

DIMENSIONS



VALVE SIZE (inches)						
	1/2	3/4	1	1 1/2	2	3
A	4.25	4.63	5.00	6.55	7.05	8.05
B	3.50	3.88	4.25	5.00	6.00	7.50
C	0.62	0.82	1.04	1.61	2.07	3.07
D	1.77	2.03	2.03	2.50	3.00	3.75
E	2.16	2.50	2.50	3.50	4.23	5.00
F	1.13	1.31	1.31	1.50	1.50	2.16
G	0.56	0.56	0.56	0.75	1.00	1.125
H	0.38	0.38	0.38	0.50	0.50	0.69
I	1.38	1.40	1.40	2.00	2.37	2.88
J	2.88	3.48	3.48	4.20	5.03	5.25
K	10-24	10-24	10-24	5/16-18	5/16-18	5/16-18
	.25dp	.25dp	.25dp	.25dp	.25dp	.25dp
WT	3.25	5.00	5.50	9.38	14.50	22.75
lbs.						

RHINOFLEX AUSTRALIA PTY LTD.
4/7 Holder Way, Malaga,
Western Australia - 6090
Ph: +61 420832225
sales@rhinoflex.com.au
web: rhinoflexvalves.in



RHINOFLEX INDIA PVT.LTD.
NO. LG-15, Ashoka Mall,
Bund Garden Road, Pune 411001, India
Mob: +91 9699306878
Ph: +91 20 47159882
sales@rhinoflexvalves.in
web: rhinoflexvalves.in